

# Maersk Dry Container Grading Guidelines



# Exterior Criteria for All Container Grades

- Pass MCIC Standard (*Details on Page 11*)
- The container is weatherproof.
- There should be no light visible inside when container doors are closed / no hole.
- There should be no hazardous label or any label related to previous cargo attached on the container exterior.
- The door gasket should be intact and is waterproof.



# Food Grade Container Criteria

- Container is clean. **Free from** previous cargo residues, contamination, strong/bad odour, infestation, liquids, and transferable tire marks, scuffs or stains.
- Interior painted surfaces are free of damage resulting in transferable rust stains.
- The floor will be free of rough gouges, holes, splinters, un-even height floor board and exposed fasteners.
- All existing repairs are sealed and painted with no sharp edges.
- Existing dents meet customer requirements for cube sensitive cargoes.





# Sample Pictures of Food Grade Container



Picture 1. Stains on the panels are acceptable as long it is not transferable when touched by hand / paper.



Picture 2. Camouflage paint / different colour interior does not need to be repainted. The surfaces are clean, no transferable stain and no strong odour, it fulfils the Food Grade Container Criteria.

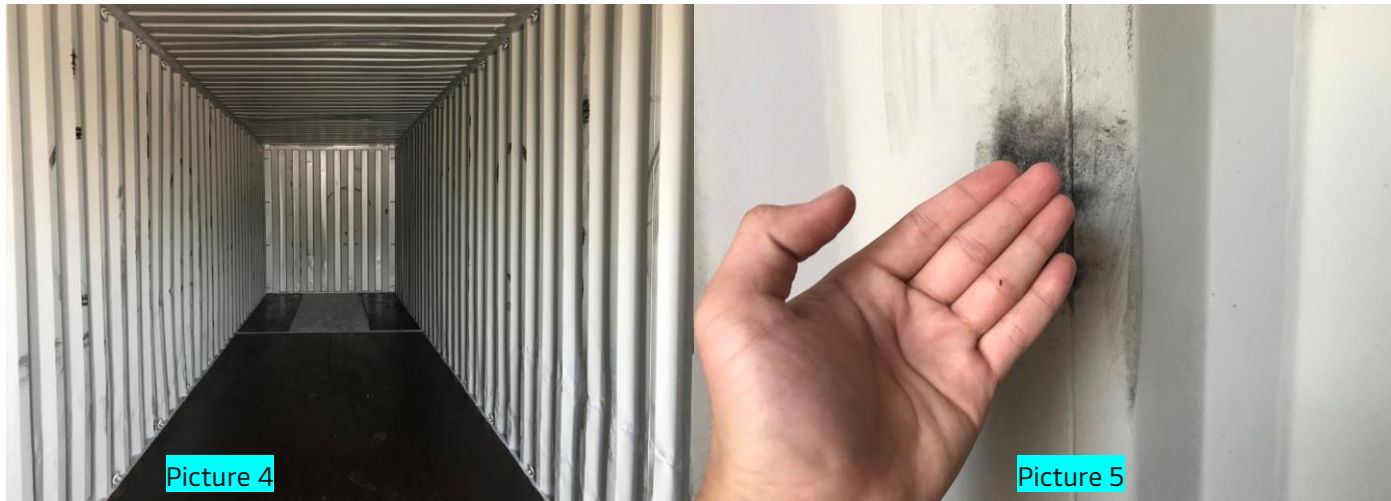
# Sample Pictures of Food Grade Container



Picture 3

Picture 3. There are minor scratches on the floor but no sharp edges, splinters, protruding screw, and un-even board.

There are stains on the floor but it's dry and non-transferable.



Picture 4

Picture 4. There are stains on the panels that are non transferable.

Picture 5. Tested by hand the stain is non transferable and safe for cargo.



Picture 5

# Sample Pictures of Food Grade Container



Picture 6. There is existing repair on panel (insert) and it is acceptable as long it is clean, painted, and not sharp.

Minor dents also acceptable as long it doesn't affect volume sensitive cargo.



Picture 7. There is existing repair on panel (patch) and it is acceptable as long it is sealed, painted, and not sharp.

Minor dents also acceptable as long it doesn't affect volume sensitive cargo.

# Sample Pictures of Food Grade Container



Picture 8. Different colour interior does not need to be repainted. The surfaces are clean, no transferable stain and no strong odour, it fulfils the Food Grade Container Criteria.



Picture 9. There are minor scratches and existing repair on the floor but no sharp edges, splinters, protruding screw, and un-even board.



# General Cargo / MCIC Grade Criteria

- Pass MCIC Standard (*Details on Page 11*)
- Interior paintwork must be between 50% - 80%, some non transferrable surface rust, scuffing or markings.
- Floor must be clean with non-transferable oil or stain marks and minor scratches or gouges.
- Intended for general cargoes such as auto-parts, plastic, packaging, paper rolls etc.





# Scrap Metal / Raw Material Grade

- Pass MCIC Standard (*Details on Page 11*)
- Interior has extensive markings, scratches and corrosions.
- Floor is extensively scratched, stained and/or with moderate delaminations.
- Intended for destructive cargo such as Scrap Metal, Raw Material, Used Spare Parts / Machinery, etc.



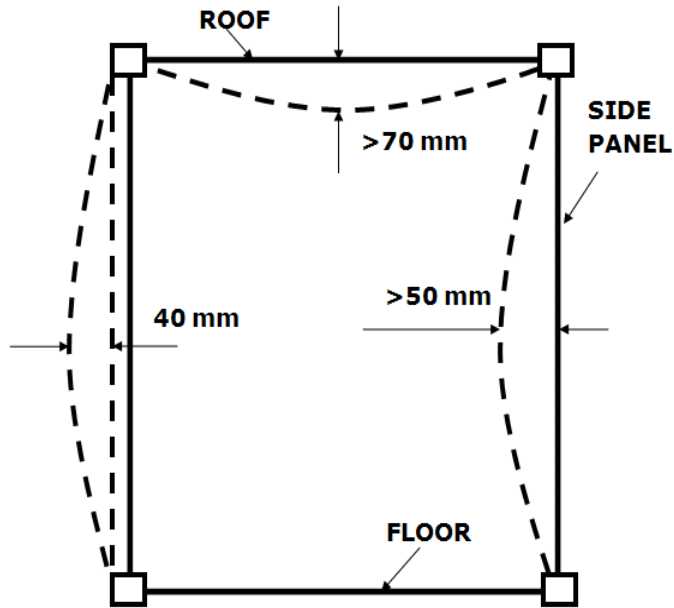
# Maersk Container Inspection Criteria (MCIC)



# Maersk Container Inspection Criteria

Checked item	Seaworthy condition
Exterior	No strange labels
Interior	Dry and clean No hole, no bad smell Oil stain on floor; rust on roof and panel if any: dry and non-transferrable
Deformation type	Acceptable limit
Dent on panel	Acceptable if internal width doesn't change exceeding 50 mm compared to standard size
Gouge on floor	Acceptable if gouge is not protruded, within 15 mm depth or within 6 mm depth and 150 mm width
Strange stain on floor or panel	Acceptable once dry and non-transferrable. Test by hand or tissue

# Maersk Container Inspection Criteria



**Acceptable** if internal width doesn't change exceeding 50 mm compared to standard size.

Dent less than the outer face of corner casting 40 mm

Illustration 1: Dent on panel



# Maersk Container Inspection Criteria



**Acceptable** if gouge is within 15 mm of depth or 6 – 15 mm of depth and 150 mm of width



Illustration 2: Gouge on floor

# Maersk Container Inspection Criteria



**Acceptable once dry and non-transferrable. Test by hand or tissue.**

**Illustration 3: Oil stain on floor**

# Maersk Container Inspection Criteria



**Acceptable once dry and non-transferrable. Test by hand or tissue.**



Illustration 4: Strange black stain on panels or floor

# Maersk Container Inspection Criteria



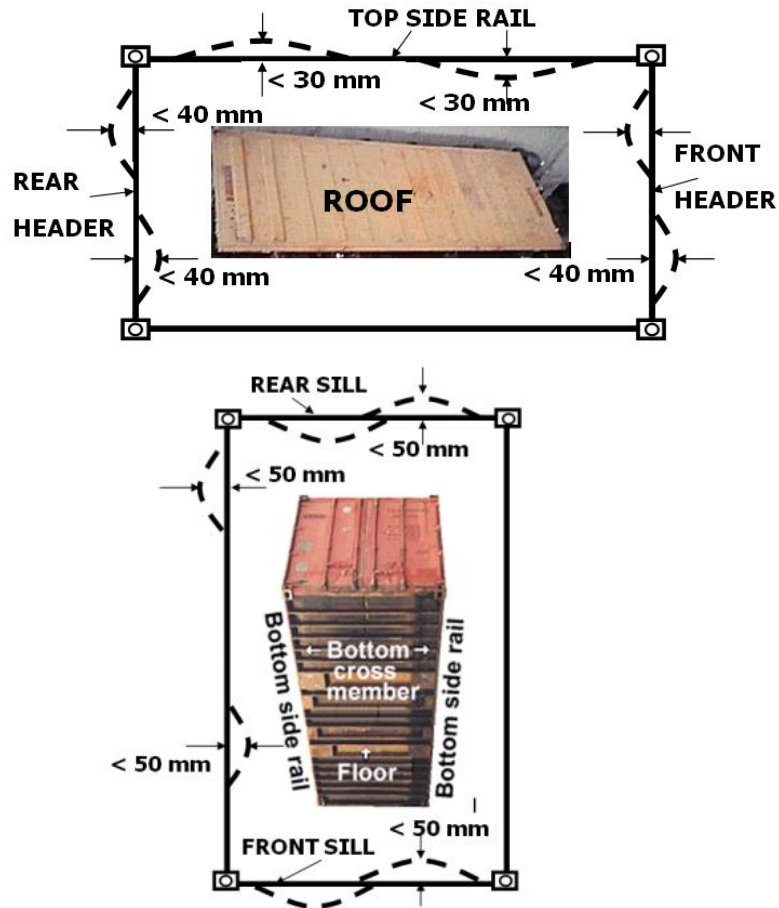
**Acceptable once dry and non-transferrable. Test by hand or tissue.**



Illustration 5: Rust stain on side panel



# Maersk Container Inspection Criteria



## Acceptable if

- Top side rail deforms within 30 mm
- Front, rear header deforms within 40 mm
- Bottom side rail deforms within 50 mm
- Front, rear sill deforms within 50 mm

Illustration 6: Deformation on side rail