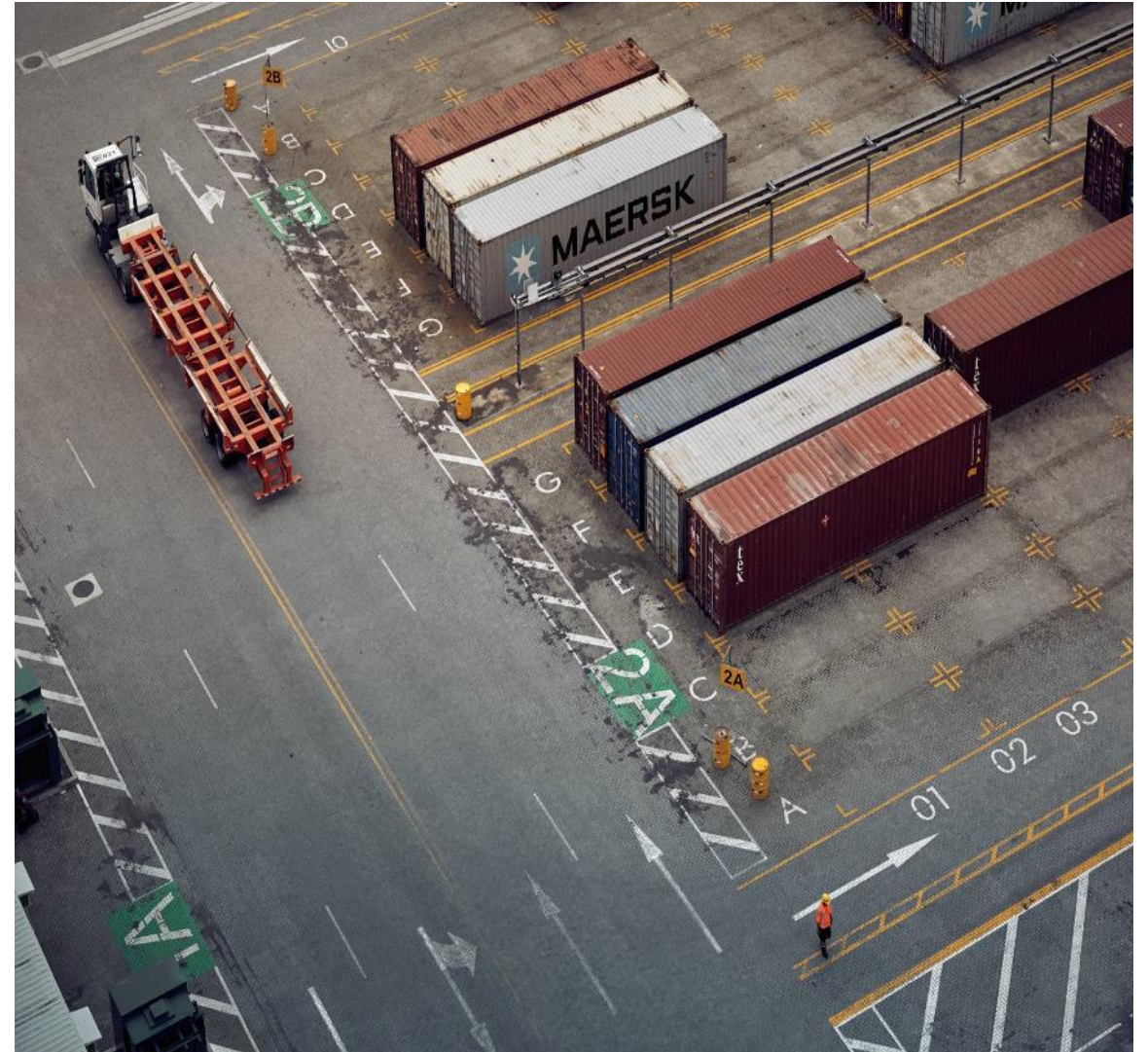


IDP DRY CONTAINER GRADE GUIDELINES



CONTAINER CONDITION

There are two main ways of grading the condition of shipping container – structure and interior aesthetics. Both of these factors can be considered independent of the other, for example; a container may be structurally sound for shipping purposes but may look unsightly due to rust and paint degradation or lots of small dents.

The basic structural condition we used is the Maersk Container Inspection Criteria for all DRY containers in-service meeting basic safety requirements to ensure the container is safe and serviceable.

CONTAINER CLASSIFICATION

S -Food Grade

New, refurbished or upgraded containers fall into this category.

Interior paintwork must be above 90% and mark free, some scuffing or scratching of paint work acceptable

Floor must be clean with minimal non-transferable oil or stain marks and scratches must not exceed 5mm in depth.



S - Food Grade



CONTAINER CLASSIFICATION

M Grade

Clean and upgraded containers fall into this category.

Interior paintwork must be above 80% with some non-transferable marks, scuffing or scratching of paint work is acceptable

Floor must be clean with minimal non-transferable oil or stain marks and scratches must not exceeding 5mm in depth.



M Grade



CONTAINER CLASSIFICATION

K Grade

Structure passed MCIC

Interior paintwork must be between 50% - 80%, some non transferrable surface rust, scuffling or markings.

Floor must be clean with non-transferable oil or stain marks and minor scratches or gouges.



K Grade



CONTAINER CLASSIFICATION

Q Grade

Structure passed MCIC

Interior has extensive markings, scratches and corrosions.

Floor is extensively stained and/or with moderate delaminations.



Q Grade



CONTAINER GRADE – COMMODITY LISTING

GRADE	COMMODITIES		
S	Foodstuff	Pharmaceuticals	
	Dairy	Palm Oil	
M	Beverages	Electronics	New Garments
	Tobacco	Tires	
K	Household goods	Machinery	Chemicals
	Plasticwares	Autoparts	Plywood panels
	Paper	Ceramic and stoneware	Consolidated cargo
Q	Scrap Metals	Metals	
	Scrap Papers	Epoxy - Resins	

NOTE:

All commodities must meet the guidelines documented in the Maersk Dry Cargo Acceptance Manual.

Commodities listed are examples only. This list may be subject to change at any time.

This is for internal use only.